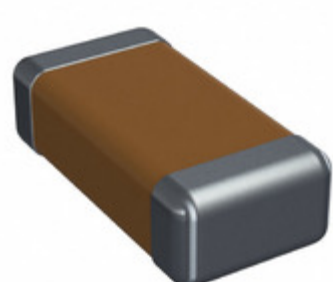


12061C102MA12A



Part Number: [12061C102MA12A](#)
Manufacturer: [AVX Corporation](#)
Description: CAP CER 1000PF 100V X7R 1206
Data sheet: [X7R Dielectric Capacitor Series](#)

RoHS Status: Lead free / RoHS Compliant
Ship From: Hong Kong
Shipment Way: DHL/Fedex/TNT/UPS/EMS

Images are for reference only.
 See Product Specifications for product details.
 Buy 12061C102MA12A with confidence from
 Component-World.HK, 1 Year Warranty

[Request For Quotation](#)

PRODUCT PARAMETER

Part Number	12061C102MA12A	Manufacturer	AVX Corporation
Description	CAP CER 1000PF 100V X7R 1206	Lead Free Status / RoHS Status	Lead free / RoHS Compliant
Quantity Available	57013 pcs	Data sheet	X7R Dielectric Capacitor Series
Category	Capacitors	Voltage - Rated	100V
Tolerance	±20%	Thickness (Max)	0.037" (0.94mm)
Temperature Coefficient	X7R	Size / Dimension	0.126" L x 0.063" W (3.20mm x 1.60mm)
Series	-	Ratings	-
Packaging	Tape & Reel (TR)	Package / Case	1206 (3216 Metric)
Operating Temperature	-55°C ~ 125°C	Mounting Type	Surface Mount, MLCC
Moisture Sensitivity Level (MSL)	1 (Unlimited)	Manufacturer Standard Lead Time	20 Weeks
Lead Style	-	Lead Spacing	-
Lead Free Status / RoHS Status	Lead free / RoHS Compliant	Height - Seated (Max)	-
Features	-	Detailed Description	1000pF ±20% 100V Ceramic Capacitor X7R 1206 (3216 Metric)
Capacitance	1000pF	Applications	General Purpose

Component-World.com is a Reliable Stocking Distributor of Electronic Components. We specialize in all AVX Corporation series electronic components. We have 57013 pieces of AVX Corporation 12061C102MA12A in stock available now. Request a quote from electronics components distributor at Component-World.com, our sales team will contact you within 24 hours.
 RFQ Email: info@Components-World.com

RELATED PRODUCTS

	Part#: 12061C102JAZ2A Description: CAP CER 1000PF 100V X7R 1206	Manufacturers: AVX Corporation	RFQ
	Part#: 12061C103K4T2A Description: CAP CER 10000PF 100V X7R 1206	Manufacturers: AVX Corporation	RFQ
	Part#: 12061C102K4T2A Description: CAP CER 1000PF 100V X7R 1206	Manufacturers: AVX Corporation	RFQ
	Part#: 12061C102KAT4A Description: CAP CER 1000PF 100V X7R 1206	Manufacturers: AVX Corporation	RFQ
	Part#: 12061C103K4T4A Description: CAP CER 10000PF 100V X7R 1206	Manufacturers: AVX Corporation	RFQ
	Part#: 12061C102KAT2A Description: CAP CER 1000PF 100V X7R 1206	Manufacturers: AVX Corporation	RFQ
	Part#: 12061C102M4T4A Description: CAP CER 1000PF 100V X7R 1206	Manufacturers: AVX Corporation	RFQ
	Part#: 12061C102M4T2A Description: CAP CER 1000PF 100V X7R 1206	Manufacturers: AVX Corporation	RFQ
	Part#: 12061C102KAJ2A Description: CAP CER 1000PF 100V X7R 1206	Manufacturers: AVX Corporation	RFQ
	Part#: 12061C102MAT4A Description: CAP CER 1000PF 100V X7R 1206	Manufacturers: AVX Corporation	RFQ
	Part#: 12061C103K4Z2A Description: CAP CER 10000PF 100V X7R 1206	Manufacturers: AVX Corporation	RFQ
	Part#: 12061C102JAT2A Description: CAP CER 1000PF 100V X7R 1206	Manufacturers: AVX Corporation	RFQ
	Part#: 12061C103JAT2A Description: CAP CER 10000PF 100V X7R 1206	Manufacturers: AVX Corporation	RFQ
	Part#: 12061C102ZAT2A Description: CAP CER 1000PF 100V X7R 1206	Manufacturers: AVX Corporation	RFQ
	Part#: 12061C103KAJ2A Description: CAP CER 10000PF 100V X7R 1206	Manufacturers: AVX Corporation	RFQ
	Part#: 12061C102KAZ2A Description: CAP CER 1000PF 100V X7R 1206	Manufacturers: AVX Corporation	RFQ
	Part#: 12061C103K4Z4A Description: CAP CER 10000PF 100V X7R 1206	Manufacturers: AVX Corporation	RFQ
	Part#: 12061C103JAZ2A Description: CAP CER 10000PF 100V X7R 1206	Manufacturers: AVX Corporation	RFQ
	Part#: 12061C102K4T4A Description: CAP CER 1000PF 100V X7R 1206	Manufacturers: AVX Corporation	RFQ
	Part#: 12061C102MAT2A Description: CAP CER 1000PF 100V X7R 1206	Manufacturers: AVX Corporation	RFQ

Related keywords for 12061C102MA12A

AVX Corporation 12061C102MA12A	12061C102MA12A distributor	12061C102MA12A supplier	12061C102MA12A price
12061C102MA12A download datasheet	12061C102MA12A datasheet	12061C102MA12A stock	buy 12061C102MA12A
AVX Corporation 12061C102MA12A	AVX Corporation [MIL] 12061C102MA12A		